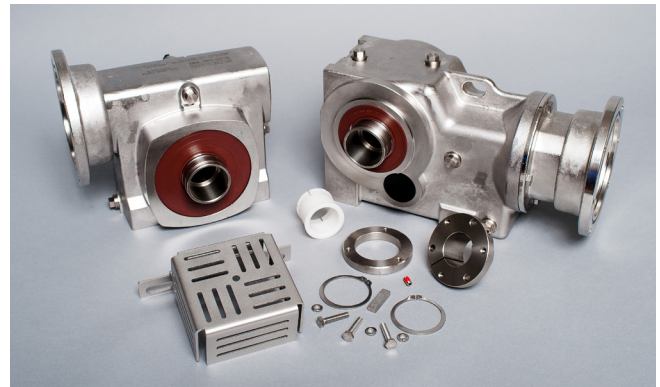
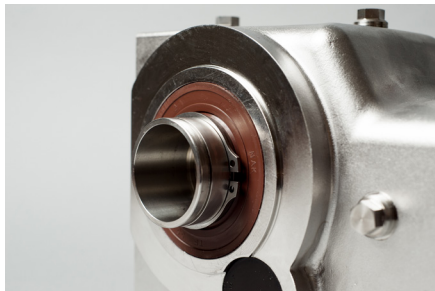
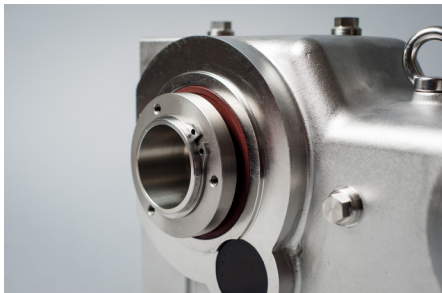


**NEW**

## SYMMETRICAL TAPERED BUSHING SMOOTH BODY HELICAL BEVEL & SMOOTH BODY WORM GEAR REDUCERS

Sterling Electric is excited to announce the arrival of our NEW Symmetrical Tapered Bushing Smooth Body Helical Bevel and Smooth Body Worm Gear reducers. This new addition provides ease of installation and reduces the problem of fret corrosion on the mounted equipment shaft when removal is required.

Our symmetrical design allows the Taper Bushing to be mounted on either the right or left hand side of the reducer. In addition the Taper Bushings are common to both the Worm Gear Reducer or Helical Bevel products to reduce inventory and provide greater flexibility to Original Equipment Manufacturers and End Users.



Our unique design is provided, as standard, with dual output Viton™ seals. The output shaft is manufactured to accommodate the Taper Bushing pull up ring on either side of the reducer. This eliminates specification of a Right/Left hand assembly when ordering.

Symmetrical Design Shaft Cover and Bushing Kits are Sold Separately. Refer To our 2000RA and Helical Gear products Catalogs for Selections by Input Horsepower and Available Ratio's.



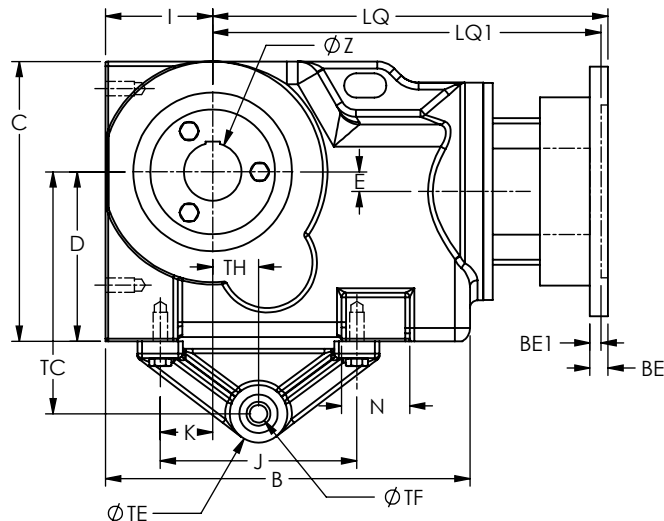
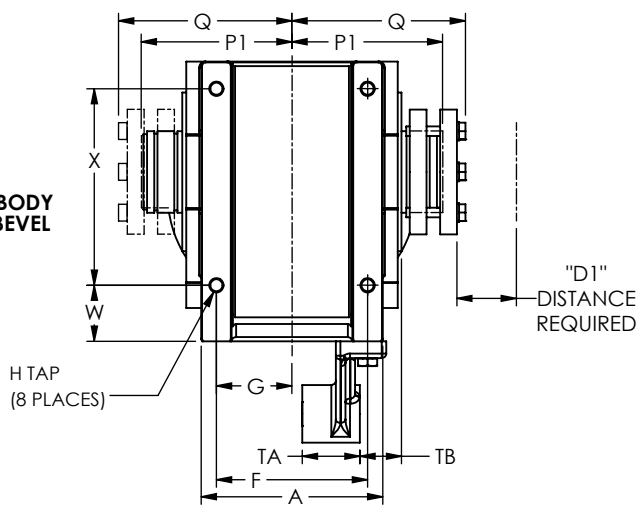
REDUCER MODEL	SHAFT COVER KIT	TAPER BUSHING KIT	HEAVY DUTY TAPER BUSHING KIT	TORQUE ARM KIT
SSK333	SSK333CKIT	SSK33-X.XXXUTBK	SSK33-X.XXXHDUTBK	SSK33TAKIT
SSK343	SSK343CKIT	SSK24-X.XXXUTBK	SSK24-X.XXXHDUTBK	SSK34TAKIT
SSK363	SSK363CKIT	SSK36-X.XXXUTBK	SSK36-X.XXXHDUTBK	SSK36TAKIT
SSK373	SSK373CKIT	SSK37-X.XXXUTBK	SSK37-X.XXXHDUTBK	SSK37TAKIT
SSB2262	SS2622SCKIT	SSK24-X.XXXUTBK	SSK24-X.XXXHDUTBK	SSB2262TAKIT
SSB2325	SS2325SCKIT	SSK36-X.XXXUTBK	SSK36-X.XXXHDUTBK	SSB2325TAKIT

CONTACT YOUR LOCAL SALES REPRESENTATIVE  
OR OUR CUSTOMER SERVICE DEPARTMENT FOR MORE INFORMATION.

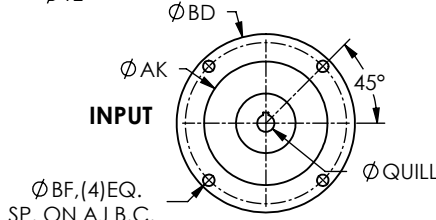
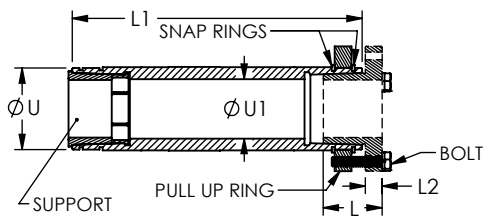
5455 W. 84th St., Indianapolis, Indiana 46268  
Phone (800) 866-7973 | [www.sterlingelectric.com](http://www.sterlingelectric.com)

# SMOOTH BODY SYMMETRICAL TAPER LOCK

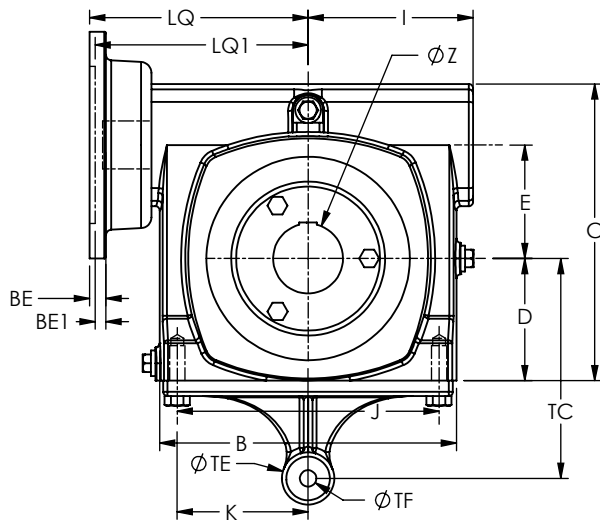
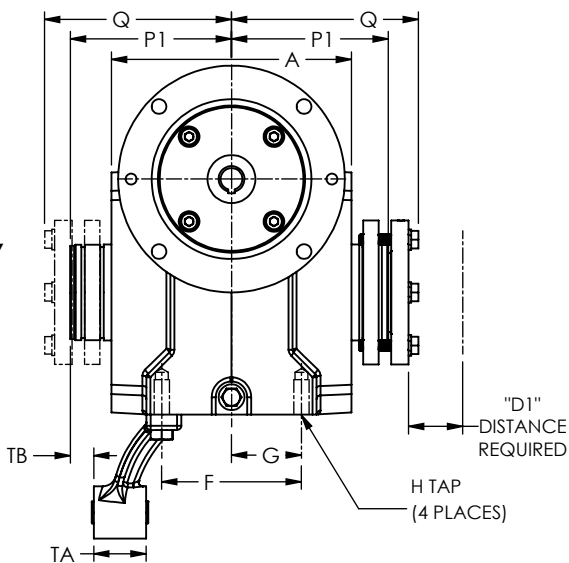
**SMOOTH BODY HELICAL BEVEL**



**SYMMETRICAL TAPER LOCK SHAFT DETAILS**



**SMOOTH BODY WORM**



SIZE	A	B	C	D	D1	E	F	G	H TAP	I	J	K	L	L1	L2	N	P1	Q	U	U1
SSK333	4.73	8.39	6.70	3.94	1.55	0.09	3.94	1.97	3/8-16	2.48	4.33	1.10	1.53	6.32	.44	1.38	3.25	3.91	1.93	1.46
SSK343	4.73	9.49	7.29	4.41	1.55	0.51	3.94	1.97	3/8-16	2.79	5.12	1.37	1.53	7.55	.44	1.77	3.88	4.52	2.13	1.55
SSK363	6.13	11.98	8.98	5.51	1.88	0.54	5.12	2.56	1/2-13	3.54	4.72	1.18	1.82	9.06	.50	2.08	4.65	5.39	2.74	2.06
SSK373	7.88	14.14	11.34	7.09	2.11	0.98	6.50	3.25	5/8-11	4.41	5.91	1.58	2.06	10.2	.56	1.50	5.22	6.08	3.13	2.31
SS2206	5.39	5.71	5.96	2.28	1.55	2.06	3.00	1.50	5/16-18	3.42	4.75	2.38	1.53	7.33	.44	--	3.76	4.40	1.93	1.46
SS2238	5.97	6.10	6.49	2.50	1.55	2.38	2.88	1.44	3/8-16	3.52	5.00	2.50	1.53	8.08	.44	--	4.14	4.78	2.13	1.55
SS2262	6.50	7.44	7.31	2.94	1.55	2.63	3.38	1.69	3/8-16	4.09	6.38	3.19	1.53	8.34	.44	--	4.67	4.90	2.13	1.55
SS2325	6.88	8.50	8.50	3.50	1.71	3.25	4.00	2.00	7/16-14	4.72	7.50	3.75	1.88	8.98	.50	--	5.07	5.35	2.74	2.05

SIZE	W	X	Z-MAX	BOLT	TA	TB	TC	TD	TE	TF	TH
SSK333	1.26	4.53	1.25	1/4-20 x 1.25	1.63	0.78	5.51	N/A	1.50	0.46	1.06
SSK343	1.46	5.12	1.500	1/4-20 x 1.25	1.63	0.73	6.30	4.68	1.50	0.46	1.19
SSK363	1.77	6.30	2.000	5/16-18 x 1.50	2.36	1.17	7.87	5.91	2.75	0.64	1.77
SSK373	2.17	7.87	2.250	3/8-16 x 1.63	2.36	0.98	9.84	7.17	2.75	0.64	2.07
SS2206	--	--	1.250	1/4-20 x 1.25	1.50	0.62	5.12	--	1.50	0.47	--
SS2238	--	--	1.500	1/4-20 x 1.25	1.50	0.65	5.12	--	1.50	0.47	--
SS2262	--	--	1.500	1/4-20 x 1.25	1.50	0.42	5.12	--	1.50	0.47	--
SS2325	--	--	2.000	5/16-18 x 1.50	1.50	0.54	6.30	--	1.50	0.47	--

**NEMA Motor C-Face Flange Locations**

SIZE	56C/140TC	180TC	210TC	250TC
	LQ	LQ1	LQ1	LQ1
SSK333	9.69	9.93	--	N/A
SSK343	10.29	10.53	--	N/A
SSK363	11.86	12.23	12.23	N/A
SSK373	13.75	13.91	13.91	13.91
SS2206	4.76	N/A	N/A	N/A
SS2238	4.86	5.45	N/A	N/A
SS2262	5.62	5.58	5.92	N/A
SS2325	6.10	6.22	6.85	N/A

**NEMA Motor C-Face Mounting Dimensions**

FRAME	AJ	AK	BD	BE	BE1	BF	QUILL	QUILL KEYWAY
56C	5.88	4.50	6.50	0.38	--	0.41	0.625	3/16 x 3/32
140TC	5.88	4.50	6.50	0.38	--	0.41	0.875	3/16 x 3/32
180TC	7.25	8.50	9.00	--	0.50	0.53	1.125	1/4 x 1/8
210TC	7.25	8.50	9.00	--	0.50	0.53	1.375	5/16 x 5/32
250TC	7.25	8.50	9.00	N/A	0.50	0.53	1.625	3/8 x 3/16

Notes: 1-Keyway width by depth  
2-Dimensions in inches