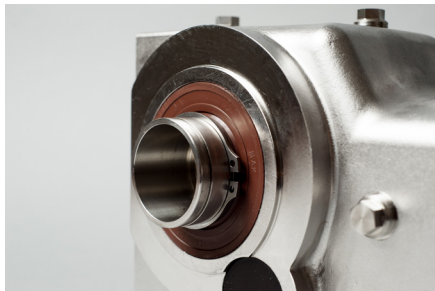
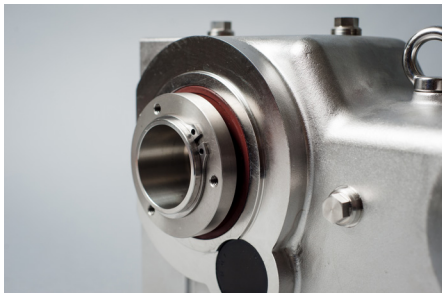


NEW

SYMMETRICAL TAPERED BUSHING SMOOTH BODY HELICAL BEVEL & SMOOTH BODY WORM GEAR REDUCERS

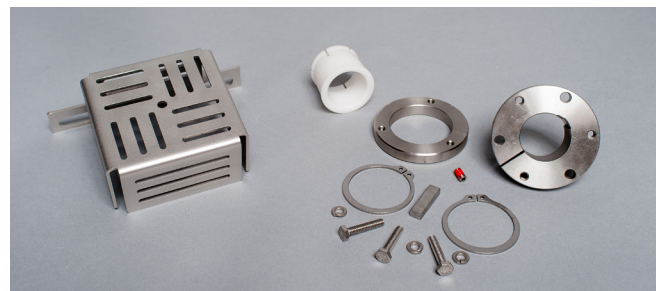
Sterling Electric is excited to announce the arrival of our NEW Symmetrical Tapered Bushing Smooth Body Helical Bevel and Smooth Body Worm Gear reducers. This new addition provides ease of installation and reduces the problem of fret corrosion on the mounted equipment shaft when removal is required.

Our symmetrical design allows the Taper Bushing to be mounted on either the right or left hand side of the reducer. In addition the Taper Bushings are common to both the Worm Gear Reducer or Helical Bevel products to reduce inventory and provide greater flexibility to Original Equipment Manufacturers and End Users.



Our unique design is provided, as standard, with dual output Viton™ seals. The output shaft is manufactured to accommodate the Taper Bushing pull up ring on either side of the reducer. This eliminates specification of a Right/Left hand assembly when ordering.

Symmetrical Design Shaft Cover and Bushing Kits are Sold Separately. Refer To our 2000RA and Helical Gear products Catalogs for Selections by Input Horsepower and Available Ratio's.



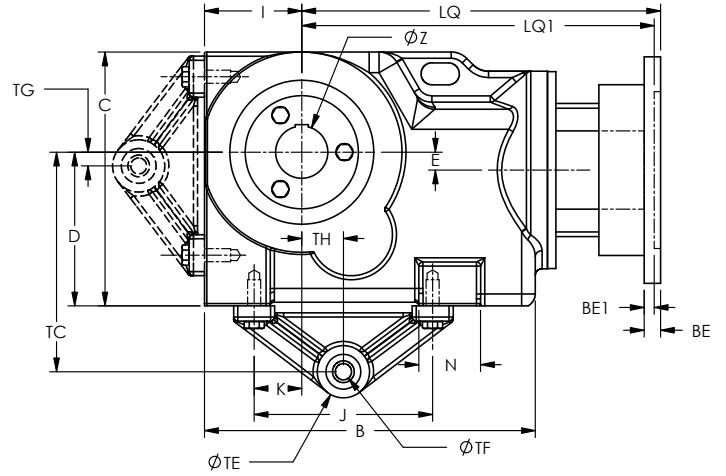
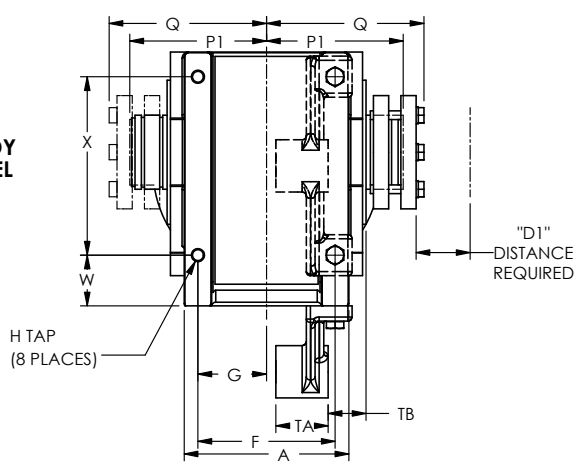
REDUCER	LIST PRICE	SHAFT COVER KIT	LIST PRICE	TAPER BUSHING KIT	LIST PRICE	TORQUE ARM	LIST PRICE
SSK343	\$ 3426	SSK34SCKIT	\$ 70	SSK24-X.XXXUTBK	\$ 404	SSK34TAKIT	\$ 218
SSK363	\$ 4824	SSK36SCKIT	\$ 84	SSK36-X.XXXUTBK	\$ 484	SSK36TAKIT	\$ 292
SSB2262	\$ 2846	SS2262SCKIT	\$ 82	SSK24-X.XXXUTBK	\$ 404	SSB2262TAKIT	\$ 218
SSB2325	\$ 4540	SS2325SCKIT	\$ 98	SSK36-X.XXXUTBK	\$ 484	SSB2325TAKIT	\$ 292

CONTACT YOUR LOCAL SALES REPRESENTATIVE
OR OUR CUSTOMER SERVICE DEPARTMENT FOR MORE INFORMATION.

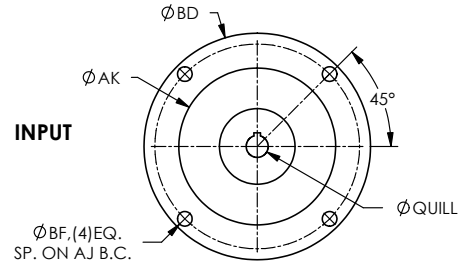
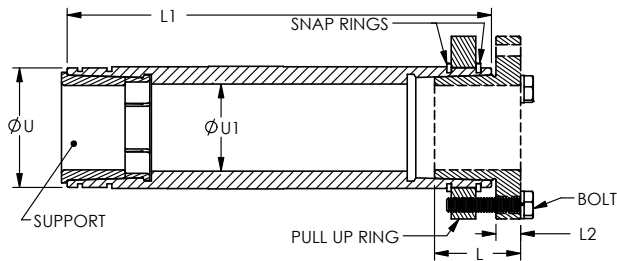
7997 Allison Avenue, Indianapolis, Indiana 46268
Phone (800) 866-7973 | www.sterlingelectric.com

SMOOTH BODY SYMMETRICAL TAPER LOCK

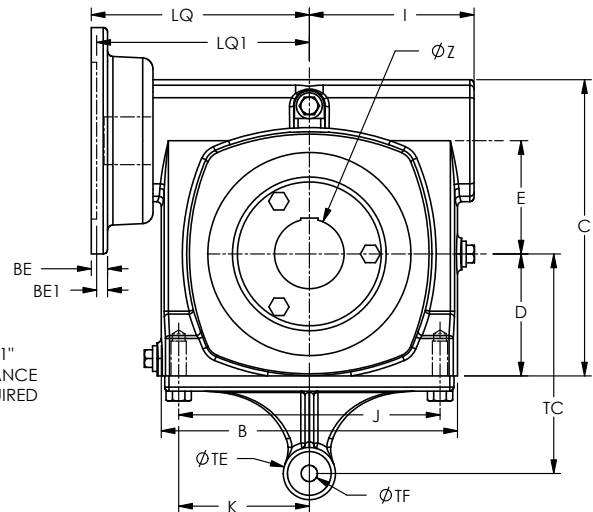
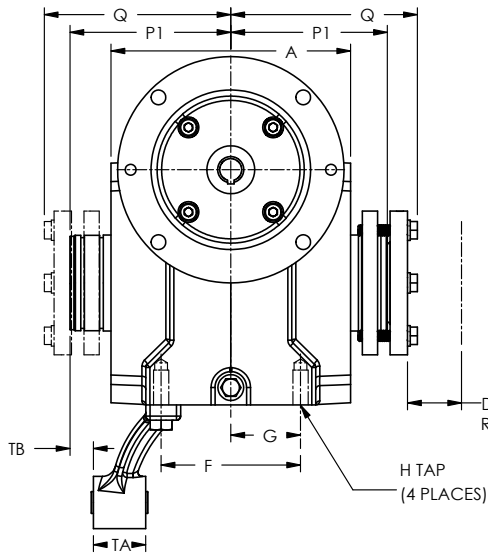
SMOOTH BODY HELICAL BEVEL



SYMMETRICAL TAPER LOCK SHAFT DETAILS



SMOOTH BODY WORM



SIZE	A	B	C	D	D1	E	F	G	H TAP	I	J	K	L	L1	L2	N	P1	Q	U	U1
SSK343	4.73	9.49	7.29	4.41	1.55	0.51	3.94	1.97	3/8-16	2.79	5.12	1.37	1.53	7.55	.44	1.77	3.88	4.52	2.13	1.55
SSK363	6.13	11.98	8.98	5.51	1.71	0.54	5.12	2.56	1/2-13	3.54	4.72	1.18	1.88	9.06	.50	2.08	4.65	5.39	2.74	2.06
S2262	6.50	7.44	7.31	2.94	1.55	2.63	3.38	1.69	3/8-16	4.09	6.38	3.19	1.53	8.34	.44	--	4.67	4.90	2.13	1.55
S2325	6.88	8.50	8.50	3.50	1.71	3.25	4.00	2.00	7/16-14	4.72	7.50	3.75	1.88	8.98	.50	--	5.07	5.35	2.74	2.05

SIZE	W	X	Z-MAX	BOLT	TA	TB	TC	TD	TE	TF	TG	TH
SSK343	1.46	5.12	1.500	1/4-20 x 1.375	1.50	0.79	6.30	4.68	1.25	0.46	0.39	1.19
SSK363	1.77	6.30	2.000	5/16-18 x 1.50	2.36	0.98	7.87	5.91	2.75	0.64	0.39	1.77
S2262	--	--	1.500	1/4-20 x 1.375	1.50	0.42	5.12	--	1.50	0.47	--	--
S2325	--	--	2.000	5/16-18 x 1.50	1.50	0.54	6.30	--	1.50	0.47	--	--

NEMA Motor C-Face Flange Locations

SIZE	56C/140TC	180TC	210TC
	LQ	LQ1	LQ1
SSK343	10.29	10.53	--
SSK363	11.99	12.23	12.23
S2262	5.62	5.58	--
S2325	6.10	6.22	6.85

NEMA Motor C-Face Mounting Dimensions

FRAME	AJ	AK	BD	BE	BE1	BF	QUILL	QUILL KEYWAY ¹
56C	5.88	4.50	6.50	0.38	--	0.41	0.625	3/16 x 3/32
140TC	5.88	4.50	6.50	0.38	--	0.41	0.875	3/16 x 3/32
180TC	7.25	8.50	9.00	--	0.50	0.53	1.125	1/4 x 1/8
210TC	7.25	8.50	9.00	--	0.50	0.53	1.375	5/16 x 5/32

Notes: 1-Keyway width by depth
2-Dimensions in inches