

NO MATTER HOW YOU CUT IT, WE HAVE THE MOTOR TO MEET YOUR APPLICATION

Sterling Electric has the right motor in both NEMA or IEC Metric Frame sizes to meet those tough cutter applications found in today's poultry processing facilities. Our cutter motors offer our Xtreme Duty features providing maintenance free operation with elimination of condensation relief drains and providing fully encapsulated windings. As an added benefit, all of our cutter motors are provided with sealed double row drive end bearings to meet the demanding overhung loads found in this process application.

In addition, we offer the option for our cutter motors being supplied pre-connected for 230, 460 or 575 Voltages with the conduit box fully encapsulated provided with a 10 Ft. connection cord for ease of installation reducing downtime.



STANDARD ROUND BODY CONSTRUCTION XTREME DUTY



CORDED ROUND BODY CONSTRUCTION XTREME DUTY

Our Xtreme Duty Features incorporated into our Cutter Motors eliminates drain requirements for condensation drain relief. Double Row drive end bearings provide extended life from use of cutter blade arbors causing greater overhung loads.

Foot Mounted Versions available upon request



As standard, non-corded motors are provided with silicone filled wired nuts and o-ring cover to allow for a water free connections.



Corded motors are provided with a removable cable gland to allow addition of a conduit connector for cable ran in conduit versus a loose cord.

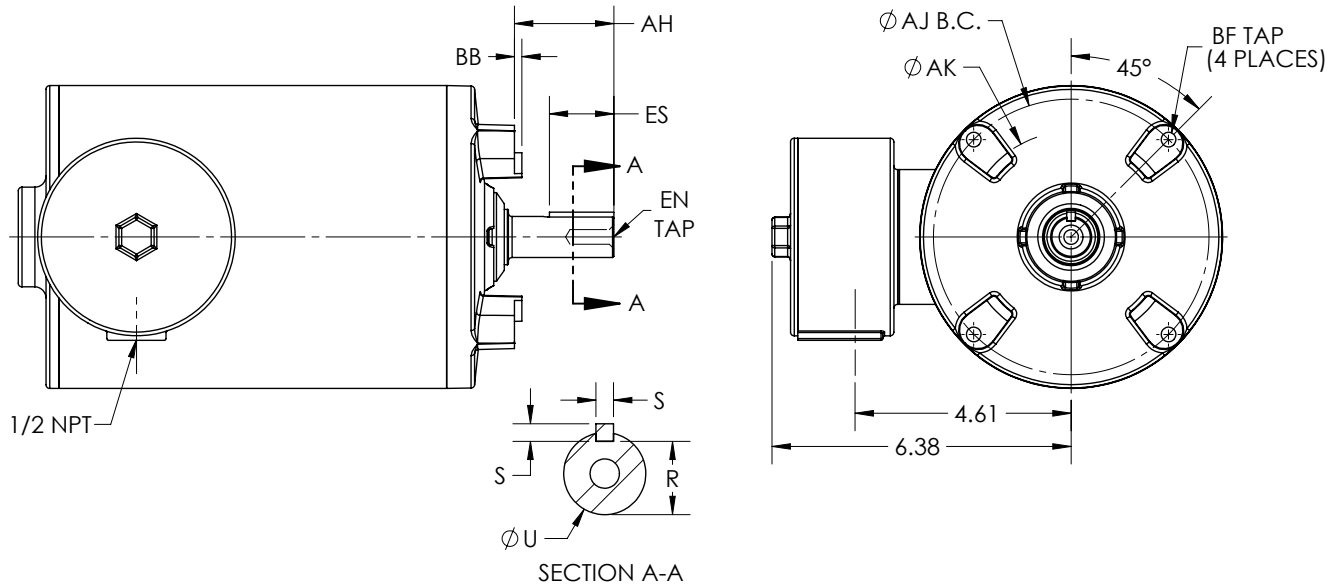


Cutter Motors are provided with Double Row Sealed Drive End Bearings and Seal to reduce entrance of water.



Tapered Drive End Bracket with narrow mounting hubs allows for optimum cleanup during sanitation.

“We have the Solutions to Your Cutter Motor Applications”



FRAME	AH	ϕAJ	ϕAK	BF TAP	BB	EN TAP	ES	R	S	ϕU
140TC	2.12 [53.8]	5.88 [149.2]	4.50 [114.3]	3/8-16	.16 [4.1]	3/8-16	1.38 [35.1]	.781 [19.84]	.188 [4.78]	.875 [22.23]
D80	1.58 [40]	3.94 [100]	3.15 [80]	M6 x 1.0	.12 [3]	M6 x 1.0	1.26 [32]	.630 [16.00]	.236 [6.00]	.748 [19.00]

2HP ratings are available in TEFC Enclosure only

Consult Factory for Dimensional Drawings on 2HP Models or Foot Mounted Versions

FOR ASSISTANCE WITH SELECTING THE CORRECT PRODUCT FOR YOUR APPLICATION
PLEASE CONTACT YOUR LOCAL STERLING ELECTRIC SALES REPRESENTATIVE
OR OUR KNOWLEDGEABLE INSIDE SALES STAFF AT

(800) 474-0520

5455 W. 84th St., Indianapolis, Indiana 46268
Phone (800) 866-7973 | www.sterlingelectric.com