

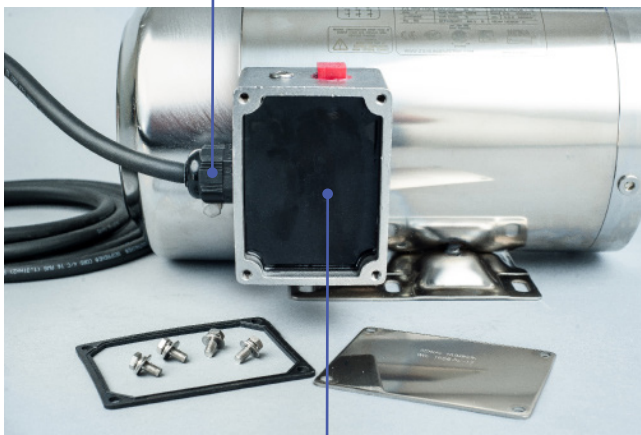
MOTOR INSTALLATION SIMPLIFIED

STERLING ELECTRIC'S YEARS OF EXPERIENCE IN THE MANUFACTURING OF ALL STAINLESS STEEL ENCAPSULATED MOTORS HAS JUST BEEN MADE SIMPLER.

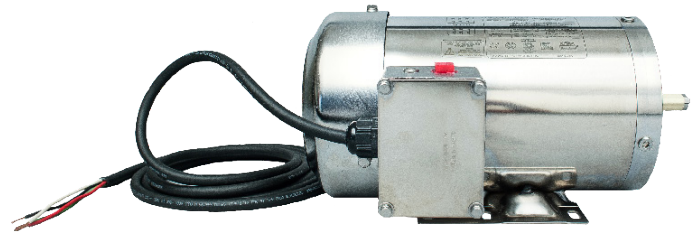
Our unsurpassed quality of Stainless Steel Encapsulated motors has been improved to provide the option of a Pre-Connected product with a 10 Foot, 4 wire, pigtail cord. Use of this option eliminates the headache of mis-connecting a motor, causing premature failure, and does not require use of silicone filled wire nuts or heat shrink tubing over the connection as required by some manufacturers.

Sterling Electric Corded Encapsulated motors reduce downtime and provide the easiest installation of motors in the Industry. Our corded motors allow the motor to be direct wired to the motor control or the ability of wiring a quick disconnect plug.

10FT, 4 WIRE, PIGTAIL CORD FOR EASE OF INSTALLATION



FULLY ENCAPSULATED CONDUIT BOX TO PREVENT ENTRANCE OF WATER



Motor shown is supplied with our Cast Stainless Steel Conduit Box Option (Additional Charge Applies)

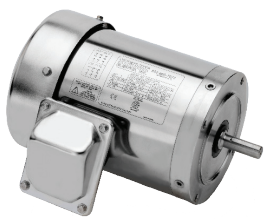
All Encapsulated Corded motors provide a **3 Year Warranty** against defects in material or workmanship. This series of motors are also provided with Pre-Installed T-Drains in the Drive End and Opposite Drive End of the motor. Rotating the motor in 90 degree increments requires customer relocation of these drains to the lowest point and maintaining an IP66/69K ingress rating.

Sterling Electric's Encapsulated Corded Motors are designed and tested to meet the harshest applications found in the Food, Beverage and Pharmaceutical industries by carrying an **IP66/69K** ingress rating to withstand high Pressure/Temperature water washdowns.

IP66/69K
RATED

CONTACT YOUR LOCAL SALES REPRESENTATIVE
OR OUR CUSTOMER SERVICE DEPARTMENT FOR MORE INFORMATION.

7997 Allison Avenue, Indianapolis, Indiana 46268
Phone (800) 866-7973 | www.sterlingelectric.com



PREMIUM EFFICIENT C-FACE FOOTLESS

3 Phase, 60 Hz., 230 or 460 Volt

HP	RPM	ENCLOSURE	FRAME	MODEL NUMBER*	LIST PRICE
.33	1800	TENV	56C	SBY034MC_-EC	\$ 1,861
.50	1800	TENV	56C	SBY054MC_-EC	\$ 1,879
	1800	TEFC	56C	SBY054PC_-EC	\$ 1,983
	1200	TEFC	56C	SBY056PC_-EC	\$ 2,027
	900	TEFC	56C	SBY058PC_-EC	\$ 1,989
.75	1800	TENV	56C	SBY074MC_-EC	\$ 2,077
	1200	TEFC	56C	SBY076PC_-EC	\$ 2,023
1.0	1800	TENV	56C	SP0014MC_-EC	\$ 2,271
	1800	TEFC	56C	SP0014PC_-EC	\$ 2,163
	1800	TEFC	143TC	XP0014PC_-EC	\$ 2,177
	1200	TEFC	56C	SP0016PC_-EC	\$ 2,205
1.5	1800	TEFC	56C	SPY154PC_-EC	\$ 2,201
	1800	TEFC	145TC	XPY154PC_-EC	\$ 2,218
2.0	1800	TEFC	56C	SP0024PC_-EC	\$ 2,347
	1800	TEFC	145TC	XP0024PC_-EC	\$ 2,361
3.0	1800	TEFC	182TC	XP0034PC_-EC	\$ 3,055
5.0	1800	TEFC	184TC	XP0054PC_-EC	\$ 3,352
7.5	1800	TEFC	213TC	XPY754PC_-EC	\$ 4,364
10	1800	TEFC	215TC	XP0104PC_-EC	\$ 4,670

*INSERT LETTER 'B' (460 VOLT) OR 'C' (230 VOLT) IN MODEL NUMBER FOR REQUIRED VOLTAGE

INVERTER DUTY (6-60HZ.) 10:1 CONSTANT TORQUE PER NEMA MG1-PART 31.

3 Phase, 60 Hz., 230 or 460 Volt
C-Face Footless Mounting

HP	RPM	ENCLOSURE	FRAME	MODEL NUMBER	LIST PRICE
.50	1800	TENV	56C	SIY054MC_-EC	\$ 2,845
.75	1800	TEFC	56C	SIY074PC_-EC	\$ 3,073
1.0	1800	TEFC	56C	SI0014PC_-EC	\$ 3,145
	1800	TEFC	143TC	XI0014PC_-EC	\$ 3,145
1.5	1800	TEFC	56C	SIY154PC_-EC	\$ 3,277
	1800	TEFC	145TC	XIY154PC_-EC	\$ 3,277
2.0	1800	TEFC	56C	SI0024PC_-EC	\$ 3,417
	1800	TEFC	145TC	XI0024PC_-EC	\$ 3,417
3.0	1800	TEFC	182TC	XI0034PC_-EC	\$ 3,629
5.0	1800	TEFC	184TC	XI0054PC_-EC	\$ 4,033
7.5	1800	TEFC	213TC	XIY754PC_-EC	\$ 5,513
10	1800	TEFC	215TC	XI0104PC_-EC	\$ 6,125

OPTIONS

Cast Stainless Steel Conduit Box

FRAME	MODEL NUMBER	LIST PRICE
56/140	S56CSTBK-1	\$152
180	X180CSTBK-1	\$165
210	X210CSTBK-1	\$180



PREMIUM EFFICIENT C-FACE FOOT MOUNTED

3 Phase, 60 Hz., 230 or 460 Volt

HP	RPM	ENCLOSURE	FRAME	MODEL NUMBER *	LIST PRICE
.33	3600	TENV	56C	SBY032MH_-EC	\$ 1,793
	1800	TENV	56C	SBY034MH_-EC	\$ 1,865
.50	3600	TENV	56C	SBY052MH_-EC	\$ 1,809
	1800	TENV	56C	SBY054MH_-EC	\$ 1,885
.75	3600	TENV	56C	SBY072MH_-EC	\$ 1,869
	1800	TENV	56C	SBY074MH_-EC	\$ 1,993
1	3600	TEFC	56C	SP0012PH_-EC	\$ 2,099
	1800	TENV	56C	SP0014MH_-EC	\$ 2,275
	1800	TEFC	56C	SP0014PH_-EC	\$ 2,177
	1800	TEFC	143TC	XP0014PH_-EC	\$ 2,223
1.5	3600	TEFC	56C	SPY152PH_-EC	\$ 2,225
	3600	TEFC	145TC	XPY152PH_-EC	\$ 2,276
	1800	TEFC	56C	SPY154PH_-EC	\$ 2,219
	1800	TEFC	145TC	XPY154PH_-EC	\$ 2,264
2	3600	TEFC	56C	SP0022PH_-EC	\$ 2,337
	3600	TEFC	145TC	XP0022PH_-EC	\$ 2,490
	1800	TEFC	56C	SP0024PH_-EC	\$ 2,360
	1800	TEFC	145TC	XP0024PH_-EC	\$ 2,464
3	3600	TEFC	182TC	XP0032PH_-EC	\$ 3,182
	1800	TEFC	182TC	XP0034PH_-EC	\$ 3,101
5	3600	TEFC	184TC	XP0052PH_-EC	\$ 3,490
	1800	TEFC	184TC	XP0054PH_-EC	\$ 3,398
7.5	3600	TEFC	213TC	XPY752PH_-EC	\$ 4,523
	1800	TEFC	213TC	XPY754PH_-EC	\$ 4,402
10	3600	TEFC	215TC	XP0102PH_-EC	\$ 4,830
	1800	TEFC	215TC	XP0104PH_-EC	\$ 4,710

*INSERT LETTER 'B' (460 VOLT) OR 'C' (230 VOLT) IN MODEL NUMBER FOR REQUIRED VOLTAGE

INVERTER DUTY (6-60HZ.) 10:1 CONSTANT TORQUE PER NEMA MG1-PART 31.

3Phase, 60 Hz., 230 or 460 Volt
C-Face Foot Mounted

HP	RPM	ENCLOSURE	FRAME	MODEL NUMBER	LIST PRICE
.50	1800	TENV	56C	SIY054MH_-EC	\$ 2,861
.75	1800	TEFC	56C	SIY074PH_-EC	\$ 3,081
1.0	1800	TEFC	56C	SI0014PH_-EC	\$ 3,153
	1800	TEFC	143TC	XI0014PH_-EC	\$ 3,153
1.5	1800	TEFC	56C	SIY154PH_-EC	\$ 3,293
	1800	TEFC	145TC	XIY154PH_-EC	\$ 3,293
2.0	1800	TEFC	56C	SI0024PH_-EC	\$ 3,433
	1800	TEFC	145TC	XI0024PH_-EC	\$ 3,433
3.0	1800	TEFC	182TC	XI0034PH_-EC	\$ 3,649
5.0	1800	TEFC	184TC	XI0054PH_-EC	\$ 4,053
7.5	1800	TEFC	213TC	XIY754PH_-EC	\$ 5,525
10	1800	TEFC	215TC	XI0104PH_-EC	\$ 6,141

All prices shown in this bulletin are for Motors with a Cord.
For a Non-Corded version price, please consult our inside salesstaff for assistance