

STERLING ELECTRIC, INC.

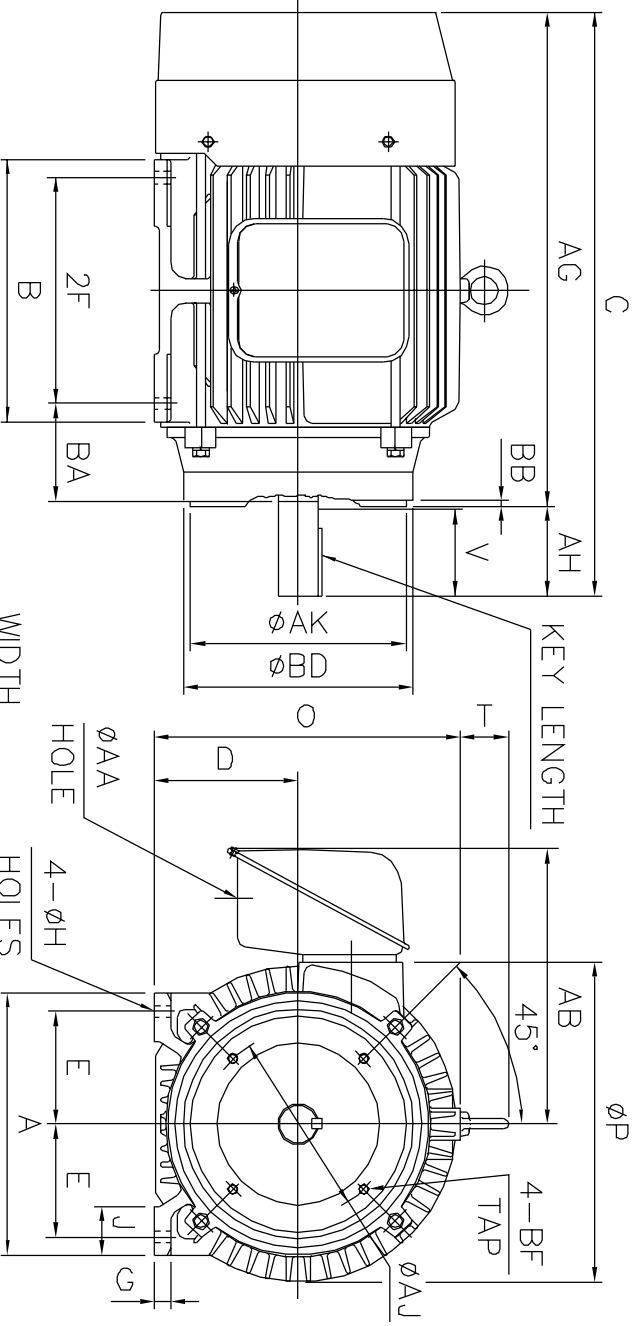
IRVINE, CA

TOTALLY ENCLOSED FAN
COOLED, SQUIRREL CAGE
ROTOR (E SERIES)

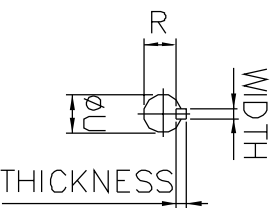
FILE: 365TC
CUSTOMER:
P.O. NO:
ORDER NO:

OUTPUT	POLE	SYN. SPEED	VOLT.	FREQ	TIME RATING	MODEL	FRAME NO.
		1800				TEFC	365TC

MOTOR CODE :



FLANGE			
AJ	AK	BB	BD
		BD	BF
11.00	12.50	0.25	14.00 .63-11



A	B	C	D	E	2F	G	H	J	AG	O+T	P	AA	AB	AH
16.40	15.40	33.52	9.00	7.00	12.25	0.98	0.66	3.15	27.90	21.30	19.21	3.58	17.32	5.62

BA	KEY		KEYSEAT	SHAFT	
	WIDTH	THICK- NESS	R	U	V
5.88	.625	.625	4.28	2.021	2.375
					4.5

- NOTE: 1. TOLERANCE OF SHAFT END DIAMETER U: +0.000, -0.001
 2. TOLERANCE OF SHAFT CENTER HEIGHT D: +0.000, -0.03
 3. DIMENSION R TOLERANCE: +0.000, -0.015
 4. DIMENSION AK TOLERANCE: +0.000, -0.003
 5. DIMENSION V IS LENGTH OF STRAIGHT PART OF SHAFT.
 6. F CLASS INSULATION.

DESIGNED	SCALE NONE
CHECKED	DIMENSION IN INCHES
APPROVED	3RD ANGLE PROJECTION
	DWG. NO: